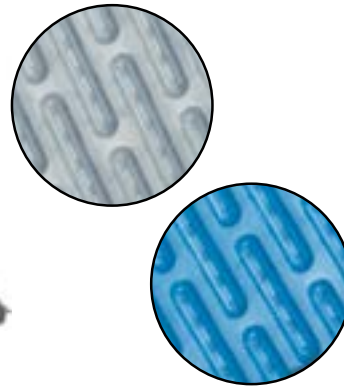


The Ergomat Softline is made of pure Nitril rubber and is designed to increase comfort while reducing tripping hazards, body aches, quality issues, and sick leave. This is the ultimate mat for extreme environments.



Unmatched Safety Features

- Molded beveled edges
 - They will never curl up, eliminating tripping hazards
- Any size, any shape mat, always in one piece
 - No overlapping or worn-out connecting mats, also eliminating tripping hazards

Highest Quality

- Virgin raw material only
 - Unbeaten durability and ergonomic relief
- Silicone & latex-free
- Not only anti-fatigue, but also true ergonomic benefits
 - Unique ergonomic designs, eliminating and preventing common problems encountered in standing environments stimulating the body to increase blood circulation and alertness that will reduce sick leave, workers' compensation and quality issues.

The Softline Advantage

- Chemical exposure will not affect the state of the mat; no curling up, swelling or expanding
 - No tripping hazards, maintains the ergonomic properties
- Meets USDA/CFIA standards
- Cross contamination risks are prevented
- Unique design allows for exceptional anti-slip properties and easy cleaning of metal chips
- Withstands sparks and welding chips up to 300°F (150°C)
- Cleanroom ISO Class 5 (100)

Complies to USDA and CFIA standards/guidelines.

3-Year Warranty

All Ergomat product lines are conditionally warranted against normal usage* 24 hours a day, 7 days a week. The warranty does not cover damage caused by the mat being dragged or pulled from a heavy load or items being pushed or dragged across the product, such as skids or pallets. The warranty against chemicals, oils, liquids, or other matter differs with the type of mat. Please consult your dealer or an Ergomat Rep to select the correct mat for your environment. The warranty periods starts from the date of purchase. The warranty only covers the replacement of the product, no direct or indirect costs are covered.

* It is considered normal usage when a person stands or walks on the Ergomat with regular footwear in an environment where the temperature is under 25° C (77° F) and the humidity is below 80%.

For a nominal additional charge, this mat can be supplied with yellow bevels, and/or holes for drainage and air flow.


ERGOMAT® Softline



www.ergomat.com - info@ergomat.com

US: +1-440-282-4651
 English (EU): +44 03308 280 084
 Scandinavia: +45 70 22 18 40
 German: +49 9524 30367-50
 French: +33 1 446 410 28
 Dutch: +31 73 613 05 30



Properties	Standard	 Softline
Material		Nitrile
Color		Black, Grey & Blue
Weight		4600 g +/- 50 g // 10 lbs +/- 1.75 oz
Length without beveled edges		89,5 cm +/- 1% // 35.5" +/- 1%
Width without beveled edges		60 cm +/- 1% // 23.6" +/- 1%
Thickness		15 mm // 0.62"
Density	ISO 2781	1370 kg/m ³ +/- 10 %
Hardness	ISO 868	50-60 Sh A
Friction	AVK Standard	45 N
Abrasion Load = 5 N	ISO 46 49 (5N)N	92 mm ³ // 3.6 in ³
Elongation at break	ISO 37	790%
Breaking point / tensile strength	ISO 37	10,8 Mpa
Tearing strength	ISO 34 Method C	28 N/mm
Electrical Resistance Surface point to point %50 RH	IEC-61340 4-1 / ESD STM7.1-2001	>1 x 10 ¹⁰ Ω
Fire behavior	EN13501-1 DIN 4102-B1 Part 14/	Not tested
Insulation Resistance	EN 60 335-1994	11 kV
Thermal Conductance	Table Value	3,3 W/m/°C
Thermal properties Minimum use Maximum use Maximum short duration	The ergonomic properties remain	-40°C // -40°F 90°C // 194°F 150°C // 300°F
Flame Point	Table Value	400°C // 752°F
UV-resistance		Inferior
Cleanroom application	EN ISO-14644-1	ISO Class 5 (100)
Warranty		3 years